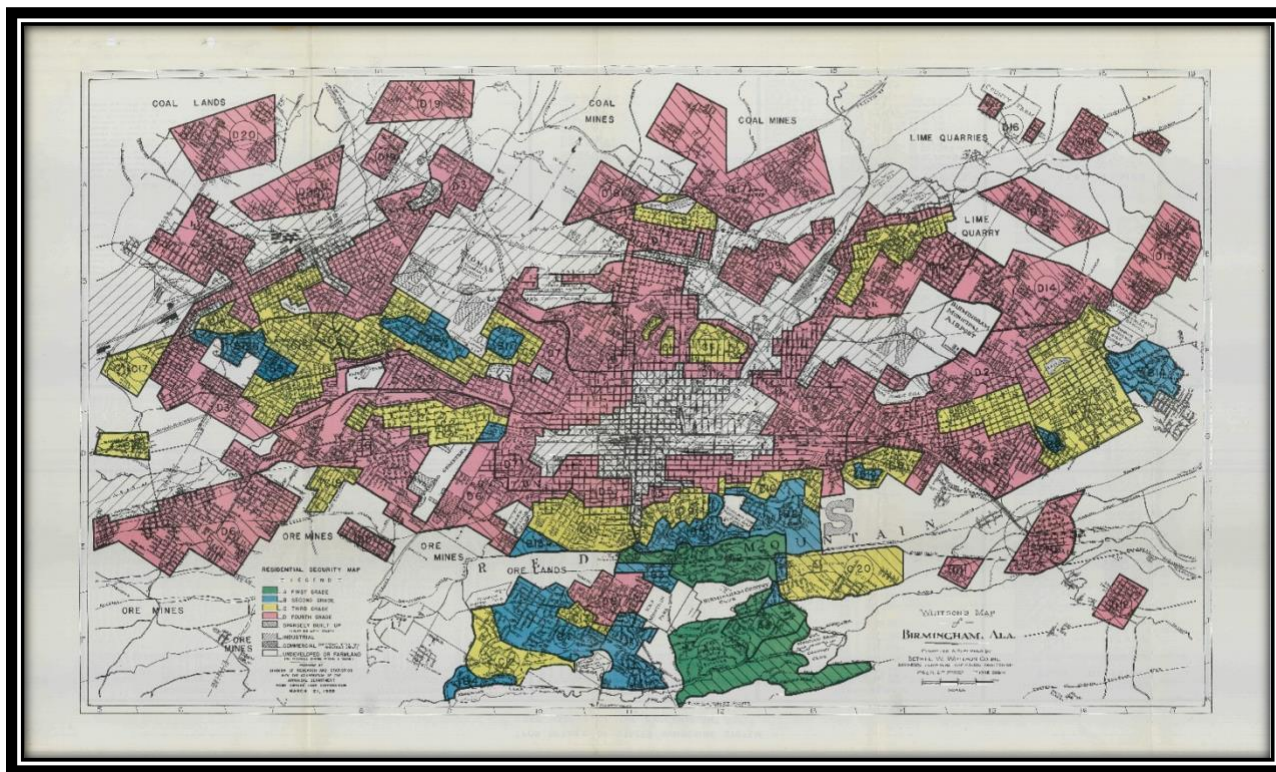


## HOUSING AND THE LAW: LESSON 2: HANDOUT 4

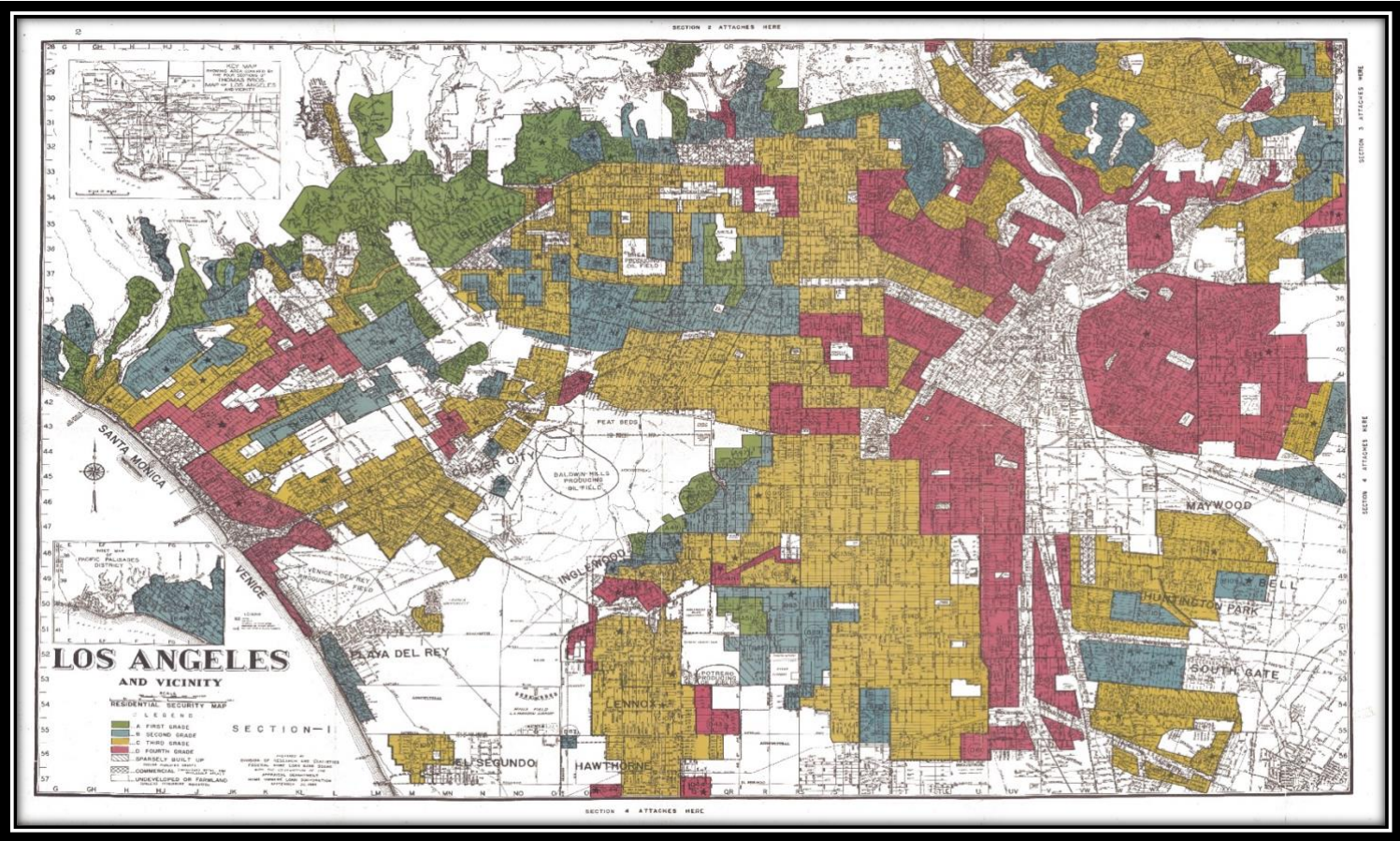
### REDLINING MAPS

If the appropriate technology is available, have students explore the *Mapping Inequality* website: <https://dsl.richmond.edu/panorama/redlining/#loc=5/39.1/-94.58>. If not, have them look through the maps copied below.<sup>1</sup>

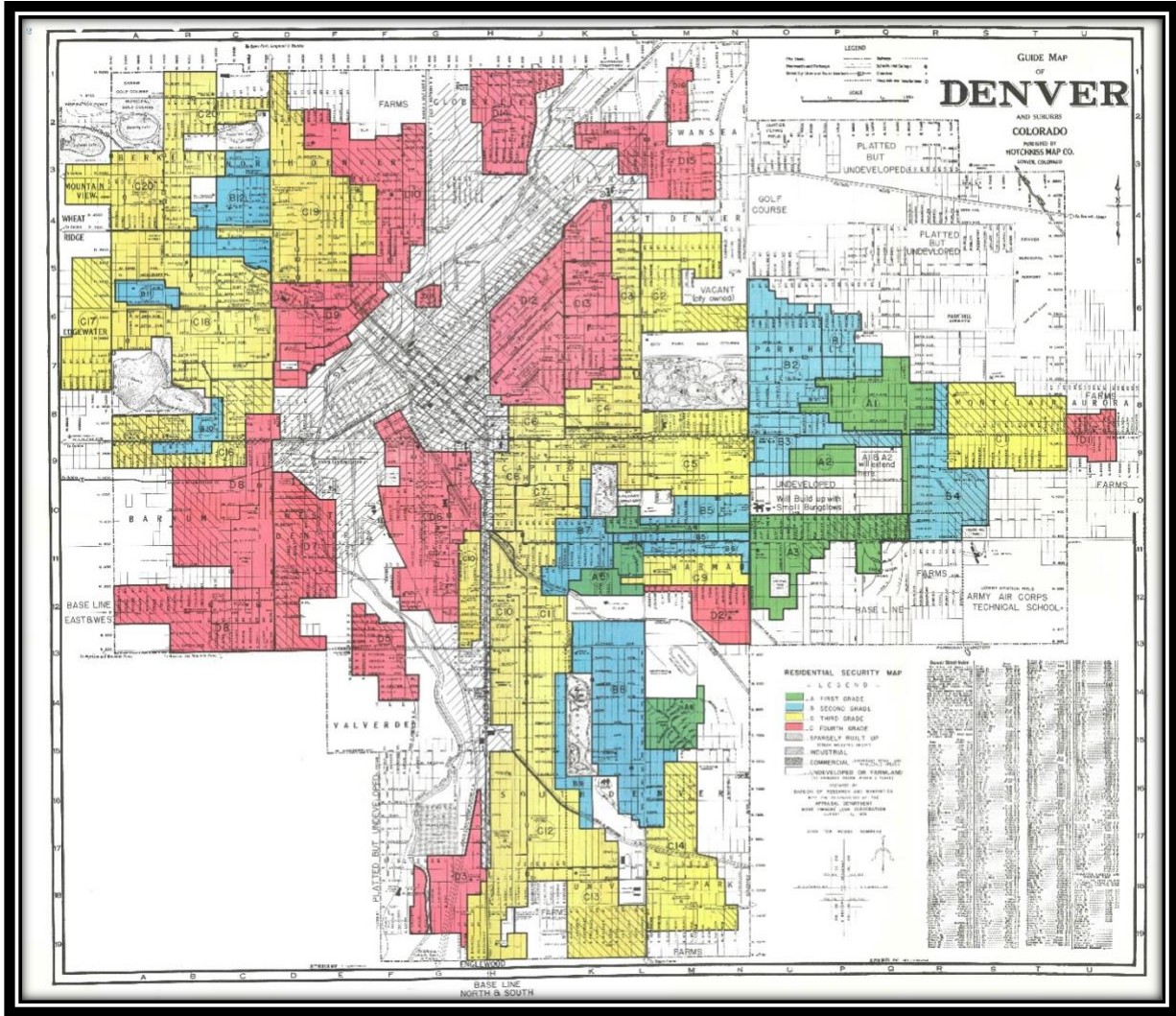


1. Birmingham, Alabama, 1938

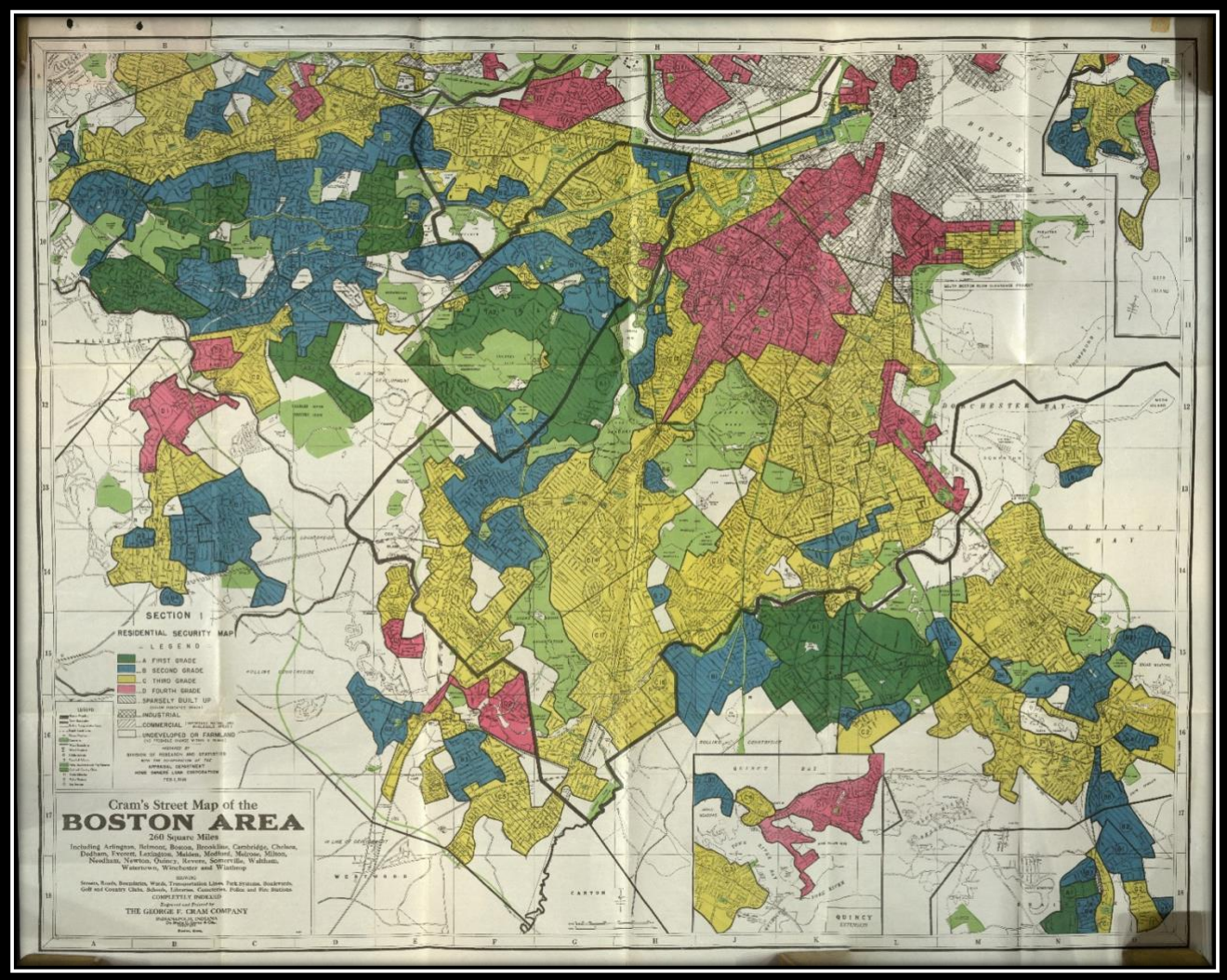
<sup>1</sup> Robert K. Nelson, LaDale Winling, Richard Marciano, Nathan Connolly, et al., "Mapping Inequality," *American Panorama*, ed. Robert K. Nelson and Edward L. Ayers, <https://dsl.richmond.edu/panorama/redlining/>.



2. Los Angeles, California, 1939



3. Denver, Colorado, 1938



4. Boston, Massachusetts, 1938